

## BB-2590/U

*High Capacity*



### APPLICATIONS

- Robotics
- UGV's / UAV's / UUV's
- Communication Devices
- Ruggedized Portable Electronics
- Autonomous Remote Sensors and Surveillance

### KEY FEATURES

- Immersion resistant per MIL-STD-810G, Section 512.5
- EMI compliant per MIL-STD-461F
- Dual output voltage
- Dual State-of-Charge (SOC) display
- High Energy Density

### COMPATIBLE CHARGERS

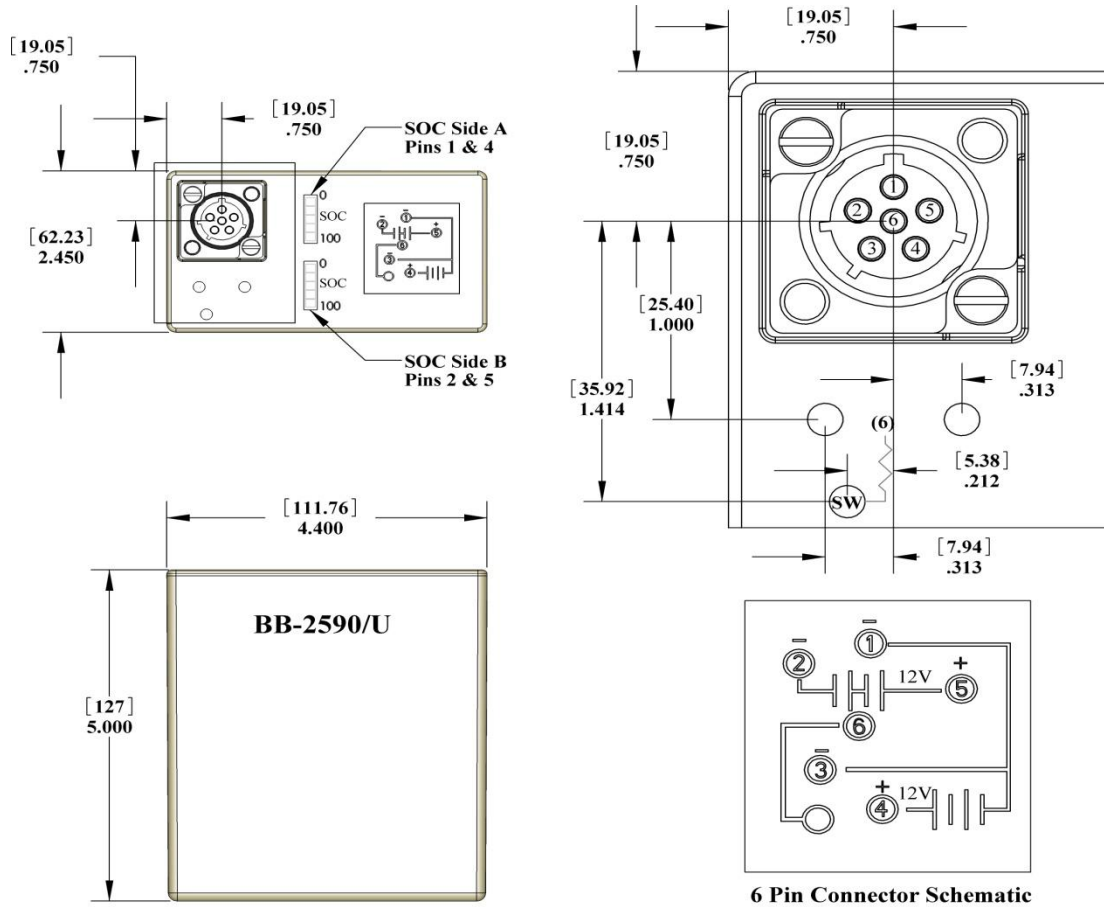
- PC-6240 24-station bulk smart charger
- PC-6080 8-bay tactical portable smart charger
- PC-6060 6-bay tactical portable smart charger
- PC-6040 4-bay tactical portable smart charger
- PC-6020 2-bay tactical portable smart charger
- PC-6010-01 1-bay tactical portable smart charger
- PC-6500 dual battery desk top charger
- PC-6200 single battery desk top charger

### COMPATIBLE CABLES

- PE-CN1 cable with metal mating connector
- PE-CN2 cable with plastic 90° mating connector
- PE-CC3 charge cable for PC-6200 charger
- PE-CC3-01 charge cable for PC-6500 charger

### BATTERY SPECIFICATIONS

<b>Model No:</b> PB-2590-8.7	<b>NSN:</b> TBD
<b>Manufacturer CAGE Code:</b> 03UN7	
<b>Voltage Range:</b> Series Mode: 20.0V min.; 30.4V nom.; 33.6V max. Parallel Mode: 10.0V min.; 15.2V nom.; 16.8V max.	
<b>Nominal Capacity:</b> Series Mode: 8.7 Ah @ 500mA @ 23°C (74°F) Parallel Mode: 17.4 Ah @ 1.0A @ 23°C (74°F)	
<b>Maximum Discharge:</b> Series Mode: 10.0 A continuous @ 23°C (74°F) Parallel Mode: 20.0 A continuous @ 23°C (74°F)	
<b>Maximum Pulse Discharge:</b> Series Mode: 18.0 A for 5 seconds @ 23°C (74°F) Parallel Mode: 36.0 A for 5 seconds @ 23°C (74°F)	
<b>Energy:</b> 264 Wh	
<b>Energy Density:</b> 183 Wh/kg, 306 Wh/l	
<b>Weight:</b> 1316 grams (2.9 lbs.)	
<b>Cycle Life:</b> > 350 cycles @ C/5 to 80% of initial capacity @ 100% depth of discharge	
<b>Operating Temp:</b> -20°C to 60°C (-4°F to 140°F)	
<b>Storage Temp:</b> -20°C to 60°C (-4°F to 140°F)	
<b>Self-Discharge:</b> < 3% per month @ 25°C (77°F)	
<b>Housing:</b> Hard plastic, black, UL 94V-0	
<b>Terminals/Connector:</b> Connector SC-C-179495	
<b>State of Charge Indicator:</b> LCD Displays – 5 segment	
<b>Safety:</b> See Material Safety Datasheet - MSDS040	
<b>Transportation:</b> Class 9 International and within U.S. unless shipped by motorcar or rail within U.S.; UN3480	
<b>Harmonized Tariff Code:</b> 8507.80.0000	
<b>Charging:</b> Charge each section at constant voltage of 16.8 Volts in a temperature range of 0° to 45°C, limiting current to 3.0 amps until current declines to 200mA. Both sections can be charged in parallel.	



DIMENSION IN: Inches[mm]