

BB-2590/U



APPLICATIONS

- Robotics
- UGV's / UAV's / UUV's
- Communication Devices
- Ruggedized Portable Electronics
- Autonomous Remote Sensors and Surveillance

KEY FEATURES

- Immersion resistant per MIL-STD-810G, Section 512.5
- EMI compliant per MIL-STD-461F
- Dual output voltage
- Dual State-of-Charge (SOC) display
- High Energy Density

COMPATIBLE CHARGERS

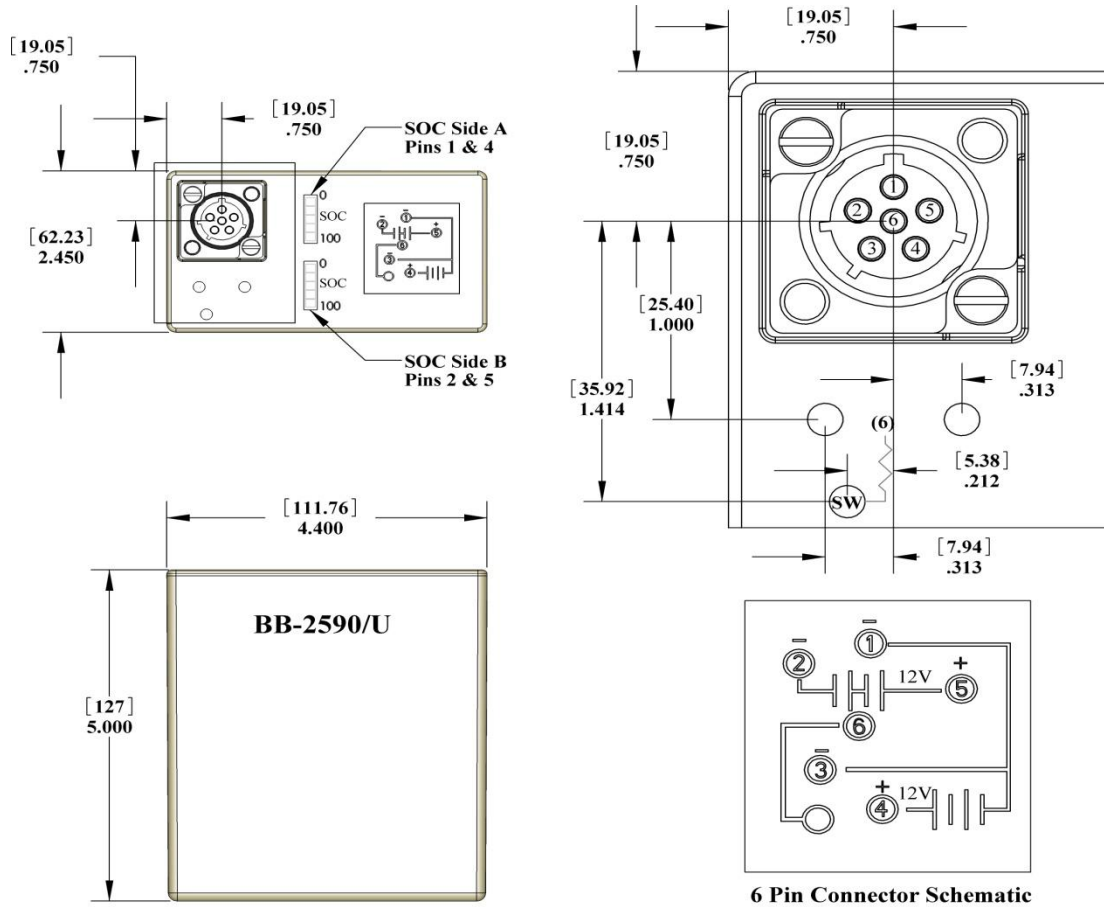
- PC-6240 24-station bulk smart charger
- PC-6080 8-bay tactical portable smart charger
- PC-6060 6-bay tactical portable smart charger
- PC-6040 4-bay tactical portable smart charger
- PC-6020 2-bay tactical portable smart charger
- PC-6010-01 1-bay tactical portable smart charger
- PC-6500 dual battery desk top charger
- PC-6200 single battery desk top charger

COMPATIBLE CABLES

- PE-CN1 cable with metal mating connector
- PE-CN2 cable with plastic 90° mating connector
- PE-CC3 charge cable for PC-6200 charger
- PE-CC3-01 charge cable for PC-6500 charger

BATTERY SPECIFICATIONS

Model No: PB-2590	NSN: TBD
Manufacturer CAGE Code: 03UN7	
Voltage Range: Series Mode: 20.0V min.; 30.4V nom.; 33.6V max. Parallel Mode: 10.0V min.; 15.2V nom.; 16.8V max.	
Nominal Capacity: Series Mode: 7.2 Ah @ 500mA @ 23°C (74°F) Parallel Mode: 14.4 Ah @ 1.0A @ 23°C (74°F)	
Maximum Discharge: Series Mode: 10.0 A continuous @ 23°C (74°F) Parallel Mode: 20.0 A continuous @ 23°C (74°F)	
Maximum Pulse Discharge: Series Mode: 18.0 A for 5 seconds @ 23°C (74°F) Parallel Mode: 36.0 A for 5 seconds @ 23°C (74°F)	
Energy: 218 Wh	
Energy Density: 159 Wh/kg, 249 Wh/l	
Weight: 1316 grams (2.9 lbs.)	
Cycle Life: > 350 cycles @ C/5 to 80% of initial capacity @ 100% depth of discharge	
Operating Temp: -20°C to 60°C (-4°F to 140°F)	
Storage Temp: -20°C to 60°C (-4°F to 140°F)	
Self-Discharge: < 3% per month @ 25°C (77°F)	
Housing: Hard plastic, black, UL 94 V-0	
Terminals/Connector: Connector SC-C-179495	
State of Charge Indicator: LCD Displays – 5 Segment	
Safety: See Material Safety Datasheet - MSDS040	
Transportation: Class 9 International and within U.S. unless shipped by motorcar or rail within U.S.; UN3480	
Harmonized Tariff Code: 8507.80.0000	
Charging: Charge each section at constant voltage of 16.8 Volts in a temperature range of 0° to 45°C, limiting current to 3.0 amps until current declines to 200mA. Both sections can be charged in parallel.	



DIMENSION IN: Inches[mm]